



REVISTA DE
GASTROENTEROLOGÍA
DE MÉXICO

www.elsevier.es/rgmx



CLINICAL IMAGE IN GASTROENTEROLOGY

Chicken bone as swallowed foreign body[☆]

Hueso de pollo como ingestión de cuerpo extraño

U.G. Rossi^{a,*}, G.R. Passoni^b, M. Cariatì^a



CrossMark

^a Department of Radiology and Interventional Radiology, San Carlo Borromeo Hospital, Milan, Italy

^b Department of Gastroenterology and Hepatology - Endoscopy Unit, San Carlo Borromeo Hospital, Milan, Italy

A 43-year-old female arrived at our emergency department, having swallowed a chicken bone. Her clinical symptoms were slight drooling and bloodstained saliva. The patient underwent fiber optic examination that revealed a bone as a foreign body in the mucosa of the proximal esophagus that appeared to cause partial perforation (fig. 1). A computed tomography scan confirmed a bone-like foreign body with pointed edges at the level of the proximal esophagus with limited perforation (fig. 2A-C). The patient underwent urgent endoscopic retrieval of the foreign body with no complications and the object was confirmed to be a sharp piece of chicken bone (fig. 3).



Figure 1 Fiber optic examination that reveals a bone-like foreign body (*) in the proximal esophagus.

[☆] Please cite this article as: Rossi UG, Passoni GR, Cariatì M. Hueso de pollo como ingestión de cuerpo extraño. Revista de Gastroenterología de México. 2016;82:107–108.

* Corresponding author. San Carlo Borromeo Hospital, Department of Radiology and Interventional Radiology, Via Pio II, 3 20153 Milan, Italy, Tel.: +39 02 40222465; fax: +39 02 40222465.

E-mail address: urossi76@hotmail.com (U.G. Rossi).

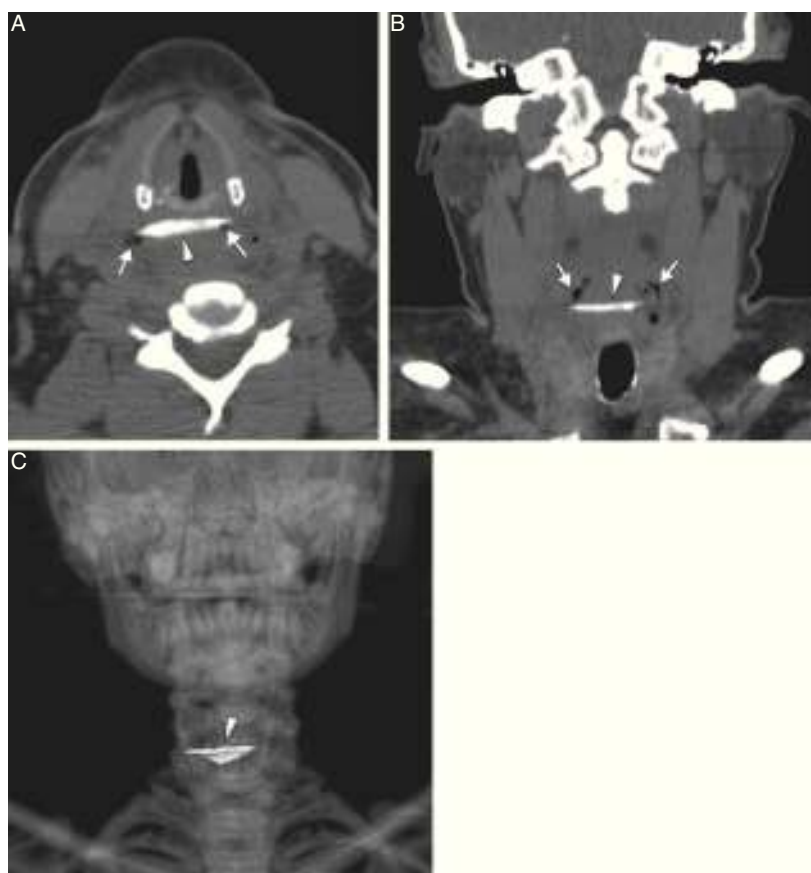


Figure 2 A) Axial and B) coronal computed tomography images showing the bone-like foreign body (arrowhead) at the level of the proximal esophagus, with small air bubbles in the soft tissue (arrows) as a sign of limited perforation. C) Coronal computed tomography volume-rendered 3D reconstruction image of the bone-like foreign body (arrowhead).



Figure 3 The extracted sharp-edged chicken bone (foreign body) broken into 2 pieces for its removal.

Ethical responsibilities

Protection of persons and animals. The authors declare that no experiments on humans or animals were carried out in relation to this study.

Data confidentiality. The authors declare that no patient data appear in this article.

Right to privacy and informed consent. The authors declare that no patient data appear in this article.

Financial disclosure

No financial support was received in relation to this study/article.

Conflict of interest

The authors declare that there is no conflict of interest.