



REVISTA DE GASTROENTEROLOGÍA DE MÉXICO

www.elsevier.es/rgmx



ORIGINAL ARTICLE

Genetics, environment, and asthma associated with celiac disease in the extended family of an affected child^{☆,☆☆}



R. Sigala-Robles, S.V. Aguayo-Patrón, A.M. Calderón de la Barca*

Coordinación de Nutrición, Centro de Investigación en Alimentación y Desarrollo, Hermosillo, Sonora, Mexico

Received 17 January 2017; accepted 2 May 2017

Available online 21 March 2018

KEYWORDS

Celiac disease;
HLA-DQ2/DQ8;
Extended family;
Asthma;
Environmental
factors

Abstract

Introduction: Celiac disease (CD) is an autoimmune enteropathy associated with gluten ingestion. In extended families of celiac patients that live in close proximity of one another, shared genetic and environmental factors can predispose them to CD.

Aim: The aim of this study was to provide evidence about the genetic and environmental factors involved in the development of CD in the extended family of a pediatric patient.

Methods: The medical history, environmental conditions, and participant weight, height, and peripheral blood samples were evaluated. The HLA-DQ2/DQ8 haplotypes were genotyped through qPCR testing and the IgA anti-gliadin and anti-transglutaminase antibodies were quantified using the ELISA test.

Results: Twelve close-living maternal relatives of the index case participated in the study. Eight of them presented with the HLA-DQ2 haplotype, inherited from the grandfather, and 7/12 and 9/12 were positive for IgA anti-gliadin and IgA anti-transglutaminase antibodies, respectively. The main intestinal symptoms stated by the participants were abdominal bloating, excess flatulence, constipation, and gastroesophageal reflux. The most frequent extra-intestinal symptoms were fatigue, stress, and anxiety. In addition, 6/13 participants had bronchial asthma.

Conclusion: The extended family living in close proximity of one another shared a genetic predisposition, environmental conditions, and asthma, which could have predisposed them to celiac disease.

© 2017 Asociación Mexicana de Gastroenterología. Published by Masson Doyma México S.A. This is an open access article under the CC BY-NC-ND license (<http://creativecommons.org/licenses/by-nc-nd/4.0/>).

[☆] Please cite this article as: Sigala-Robles R, Aguayo-Patrón SV, Calderón de la Barca AM. Genética, ambiente y asma asociados a enfermedad celiaca en la familia extendida de un niño afectado. Revista de Gastroenterología de México. 2018;83:79–85.

^{☆☆} See related content at DOI: <http://dx.doi.org/10.1016/j.rgmxen.2018.05.003>, Remes-Troche JM. Doctor, why am I a celiac if I'm Mexican? Breaking another paradigm of celiac disease in Mexico. Rev de Gastroenterol Méx. 2018;83:77–78.

* Corresponding author. Coordinación de Nutrición, Centro de Investigación en Alimentación y Desarrollo, A. C., C. P. 83304 Hermosillo, Sonora, Mexico. Tel.: +52+662 2892400, ext. 288; fax: +52+662 2800094.

E-mail address: amc@ciad.mx (A.M. Calderón de la Barca).

PALABRAS CLAVE

Enfermedad celiaca;
HLA-DQ2/DQ8;
Familia extendida;
Asma;
Factores ambientales

Genética, ambiente y asma asociados a enfermedad celiaca en la familia extendida de un niño afectado

Resumen

Introducción: La enfermedad celiaca (EC) es una enteropatía autoinmune asociada a la ingestión de gluten. En las familias extendidas de pacientes celíacos en estrecha convivencia, los factores genéticos y ambientales compartidos pueden predisponer a EC.

Objetivo: Proporcionar evidencia sobre factores genéticos y ambientales implicados en el desarrollo de la EC en una familia extendida de un paciente pediátrico.

Métodos: Se evaluaron historial clínico, condiciones ambientales, peso y talla de los participantes y se les tomó una muestra de sangre periférica. Se genotipificaron los haplotipos HLA-DQ2/DQ8 mediante qPCR y se cuantificaron por ELISA los anticuerpos IgA antigliadinas y antitransglutaminasa.

Resultados: Participaron 12 familiares maternos del caso índice, que tenían estrecha convivencia vecinal. Ocho presentaron HLA-DQ2 heredado del abuelo, 7/12 y 9/12 fueron positivos para los anticuerpos IgA antigliadinas e IgA antitransglutaminasa, respectivamente. Los principales síntomas intestinales referidos por los participantes fueron distensión abdominal, exceso de gases, estreñimiento y reflujo gastroesofágico. Los síntomas extraintestinales más frecuentes fueron fatiga, estrés y ansiedad. Además, 6/13 participantes tuvieron asma bronquial.

Conclusión: La familia extendida convive estrechamente, comparte la predisposición genética, condiciones ambientales y el asma, que podrían haberlos predispuesto a la EC.

© 2017 Asociación Mexicana de Gastroenterología. Publicado por Masson Doyma México S.A. Este es un artículo Open Access bajo la licencia CC BY-NC-ND (<http://creativecommons.org/licenses/by-nc-nd/4.0/>).

Introduction and aim

Celiac disease (CD) is an autoimmune enteropathy triggered by the ingestion of gluten in genetically predisposed persons. Its estimated prevalence in Mexico is 1:168,¹ similar to that found in Native American (1:167)² and Caucasian (1:100-1:200)³ populations. CD symptoms can be intestinal, such as diarrhea and malabsorption syndrome that cause weight loss and growth failure, or they can be extra-intestinal, such as headache, anemia, dermatitis herpetiformis, and osteoporosis.⁴ The variability in the clinical manifestations makes diagnosis difficult.

Thirty to 50% of CD is explained by the genetic risk from the HLA-DQ2/DQ8 haplotypes,⁵ as well as by environmental factors. Relatives of persons with CD are at greater risk for developing the disease, due to genetics and their common history. The risk for presenting with CD increases by 5.6-10% in first-degree relatives and by 2.3-5% in second-degree relatives.^{6,7} Thus, some authors have proposed the implementation of CD detection strategies in that high-risk group, in an effort to reduce related morbidity and mortality.^{8,9}

The traditional lifestyle of many Mexican families is to live in the same physical area, and so not only do they share genetics, but they also share environmental conditions that can increase the risk for CD. In this context, the aim of the present study was to provide evidence about the genetic and environmental factors, as well as diseases and treatments,

involved in the development of CD in the extended family of a boy with said disease.

Materials and methods**Participants**

The study was conducted in Hermosillo, Sonora, Mexico. Twelve first and second-degree relatives of a boy with CD (index case) were included. The boy, currently 10 years old, was diagnosed with CD at the age of 2, after presenting with acute symptoms and undergoing biopsy and antibody testing. Our study protocol was approved by the institutional Bioethics Committee (CE/016/2014), and written statements of informed consent were obtained from all the participants. The parents signed the statements corresponding to the participants under 18 years of age.

All participants were interviewed to obtain their medical history. In the case of children, the mothers provided the information. The weight and height of the participants were measured, and their body mass index was calculated. The nutritional status of the adults was classified according to the cutoff points of the World Health Organization,¹⁰ and the body mass index-for-age Z-score was calculated for the nutritional status of the children.¹¹

A venous blood sample was collected from each participant. A fraction was used to analyze the risk haplotypes and the rest was centrifuged to obtain serum and analyze antibodies.

DNA extraction and genotyping

Genomic DNA was extracted from the samples of dried blood drops, following the protocol described by Aguayo-Patrón et al.¹² Primers previously designed for the DQA1*0501 and DQB1*0201 (DQ2) alleles and the DQA1*0301 and DQB1*0302/3 (DQ8) alleles were used for the risk haplotype analysis.¹³ Duplex real-time PCR reactions were carried out and the alleles were identified through dissociation curve analysis.¹²

Antibody analysis

The IgA anti-gliadin (IgA-Gd) and anti-transglutaminase (IgA-TG) antibodies were evaluated in the serum samples through the enzyme-linked immunosorbent assay (ELISA) test, following a previously described technique.¹⁴ Antibody indices were calculated using the absorbance values obtained, with respect to the mean absorbance of the healthy population. Values above 1.0 were considered positive.

Results

Thirteen subjects, including the index case, participated in the study: the maternal grandparents, the mother, the sister, 4 aunts, one uncle, and 3 cousins. Eight of the participants were females, with a median age of 36 years (fig. 1). The 13 relatives lived in close proximity in a traditional Mexican extended family environment, in houses adjoining, or close to, that of the grandparents. They shared the environment and customs related to upbringing, alimentation, life-style, and treatment of illnesses.

The maternal grandparents moved from a rural zone to the city of Hermosillo in Sonora, Mexico. The second generation (mother and aunts and uncle of the index case)

spent their childhood in the rural zone in a farm environment. They all stated they had been breastfed, but also received cow's milk or goat's milk. In addition, 2 participants had complicated births, due to the lack of adequate health services in the rural zone. The father of the index case was tested for specific antibodies and haplotypes, when his son was diagnosed with CD. The results were negative, not associated with the disease, and therefore he was not included in the present study.

The third generation (index case, sister, and cousins) were born in a partially urbanized section of the city of Hermosillo. Not all the houses had a sewage system or concrete floors, and cats, dogs, chickens, and horses were kept in the homes and patios. At the time of the study, there was improved access to health services and medications, but self-medication practices were common. The parents shared medications with their children to treat similar illnesses, rarely completing the adequate doses and/or cycles. All the members of the youngest generation were delivered by cesarean section, and none of them were exclusively breastfed during their first 6 months.

Even though the CD diagnosis of the index case had been known for 8 years, the majority of the family members were not aware of their risk for developing the disease. Most of the adults attributed their symptoms to age and/or menopause. A relevant datum resulting from the medical histories was that six of the participants had been medically diagnosed with bronchial asthma (fig. 1).

In the genetic risk analysis, 9 of the 13 participants presented with the HLA-DQ2 haplotype or some of its alleles (DQA1*0501). Two cases had a combination with the DQB1*0302 allele of the HLA-DQ8 haplotype. In two other cases, there were no alleles predisposing to CD (Table 1). The antibody analysis resulted in positive titers for IgA-Gd in 7 participants and positive titers for IgA-TG in 9 participants. In both tests, the index case had titers below 1.0,

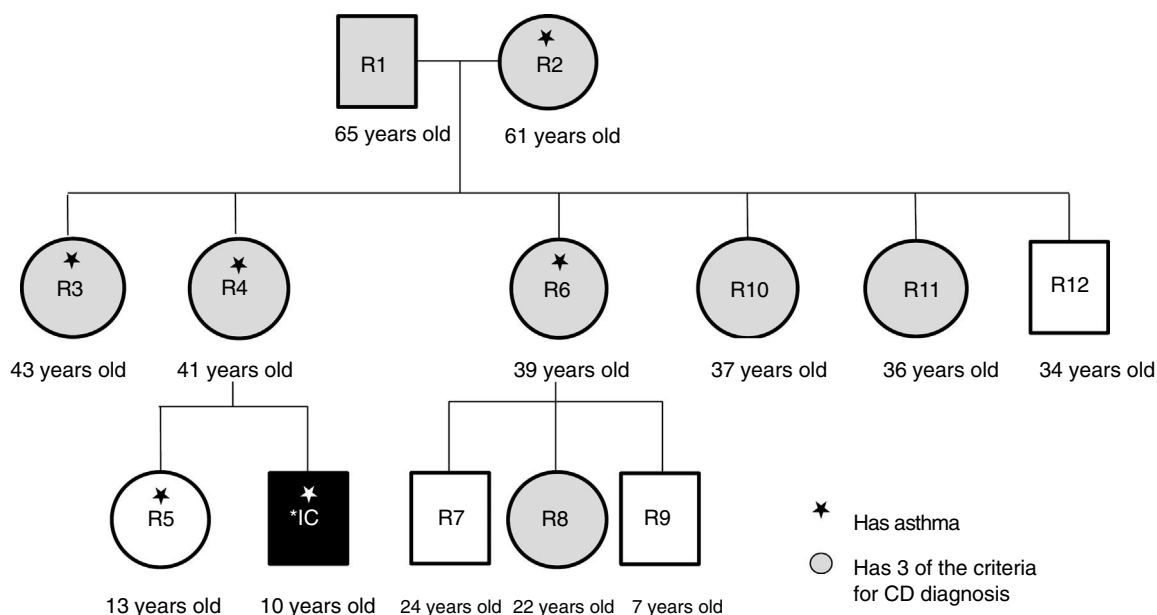


Figure 1 Family tree of the index case (IC) and relatives (R), presence of bronchial asthma, and participants with diagnostic criteria for CD.

Table 1 Haplotypes and antibody titers of the extended family relatives (R) of the index case (IC).

Case	Age/Sex		Antibodies ^a	
		Haplotype	IgA-Gd	IgA-TG
R1	65 M	DQ2, DQA1*0301	0.72	2.40
R2	61 F	DQA1*0501	1.31	1.67
R3	43 F	DQ2	1.58	1.54
R4	41 F	DQ2	1.51	2.14
R5	13 F	None	0.87	0.90
IC	10 M	DQ2	0.38	0.31
R6	39 F	DQ2, DQB1*0302/3	1.19	1.62
R7	24 M	None	0.78	0.90
R8	22 F	DQ2	1.12	1.33
R9	7 M	DQ2, DQB1*0302/3	0.24	0.19
R10	37 F	DQ2	1.52	1.42
R11	36 F	DQA1*0301	1.34	2.07
R12	34 M	DQA1*0301	0.84	1.07

F: female; IgA-Gd: IgA against gliadins; IgA-TG: IgA against transglutaminase; M: male.

^a Antibody indices (≥ 1 is positive).

Table 2 Nutritional status of the extended family relatives of the index case.

Case	BMI ^a	Classification ^a
R1	31.53	Obesity I
R2	28.38	Overweight
R3	34.19	Obesity I
R4	28.02	Overweight
R5	26.13*	Overweight
IC	14.08*	Adequate
R6	37.26	Obesity II
R7	26.41	Overweight
R8	34.55	Obesity I
R9	16.25*	Adequate
R10	41.32	Obesity III
R11	28.17	Overweight
R12	22.83	Adequate

BMI: body mass index; IC: index case; R: relative.

^a Classification according to the World Health Organization body mass index criteria for adults¹⁰ and the body mass index/age Z score for children.¹¹

which was due to 8 years of a gluten-free diet as treatment for CD (Table 1).

In relation to body mass index, the participants had some grade of overweight or obesity, except for the index case, relative (R) 9, and R12 (Table 2). The intestinal symptoms associated with CD were more recurrent than the extra-intestinal ones, in the relatives studied. Table 3 shows that the most frequent symptom was abdominal bloating (11/13 participants), followed by food intolerance (9/13 participants), and excess flatulence (8/13 participants). Participants R3 and R10 reported having bloating and abdominal pain after eating foods containing corn.

With respect to extra-intestinal symptoms, a greater number of participants presented with fatigue (10/13 participants), stress, anxiety, sleep disturbances, and muscle cramps (8/13 participants). Other clinical signs, such as

urticaria, aphthous mouth ulcers, damaged tooth enamel, dermatitis, and weight loss were reported less frequently (3 a 4/13 participants) (Table 4).

Discussion and conclusions

As is still a custom in some places of Mexico, the extended family in our study lives in houses adjoining, or close to, that of the grandparents. Thus, not only do they share genetics, but they also share the environment, child-raising customs, and lifestyle. Feeding practices during infancy and microbial infections and their treatment can influence the composition of the microbiota, affect the intestinal barrier, and possibly trigger CD.¹⁵ This can have repercussions in both childhood and adulthood,¹⁶ signifying that the members of the family under study shared the environmental risk for CD.

Most of the study participants had the HLA-DQ2 haplotype, inherited from the grandfather (Table 1), whereas in a Mexican population, the most common haplotype in cases of CD was found to be HLA-DQ8. The haplotype of greatest risk was HLA-DQ8, alone (1:9), or combined with the DQB1*0201 allele of the HLA-DQ2 haplotype (1:6), whereas the HLA-DQ2 haplotype had a risk of 1:27.¹⁷ In contrast, 88% of the CD cases in a European population presented with the HLA-DQ2 haplotype or its variants,¹⁸ with a mean risk of 1:10.⁵ The phenotype of our study participants was mestizo, but that of the grandfather was Caucasian.

Seventy-five percent of the study relatives had positive titers for IgA antibodies against tissue transglutaminase (9/13 participants), which was much higher than the 47% with positive serology reported by Rodrigo et al.¹⁹ in a family case. If the fact that 0.6% of the Mexican population presents with positive serology for CD¹ is considered, then high risk for CD of relatives of celiac patients can be inferred. Likewise, a combined prevalence of 7.5% in first-degree relatives and 2.3% of second-degree relatives has been described.⁷

Regarding anthropometric indicators, in general, the relatives had short stature, as did the index case. The height of two of the adult males was below the regional mean (162.7 cm and 165 cm vs 166.5 cm),²⁰ and the mean height of the females was far below the regional mean (131.04 cm vs 155.7 cm).²¹ It has been reported that short children with CD do not reach their maximum height as adults,²² and this is inversely related to the time of diagnosis.²³ In other words, even though the participants in our study were apparently asymptomatic, they possibly presented with a less acute form of CD since childhood that could have affected their development. Even though the index case was diagnosed with classic CD at the age of 2, he was not given adequate dietary follow-up until he was 6 years old.

In relation to symptoms, most of the participants stated the most frequent were gastrointestinal, such as abdominal bloating, food intolerance, excess flatulence, and constipation, coinciding with that found in Mexican adults with CD.²⁴ Extra-intestinal symptoms were less frequent and the most reported included fatigue, headache, dermatitis, and anorexia.

Duodenal biopsies were not taken to confirm the diagnosis of CD in the relatives, because even though it is the criterion standard, it is an invasive and costly procedure. Therefore, serologic analysis was contemplated as a viable

Table 3 Intestinal symptoms of the extended family relatives of the index case.

Symptoms	n/No.	Cases
Abdominal bloating	11/13	IC, R1, R2, R4, R5, R6, R7, R8, R9, R10, R11
Food intolerance	9/13	IC, R2, R3, R4, R6, R7, R8, R9, R10
Excess flatulence	8/13	IC, R1, R2, R5, R7, R9, R10, R11
Constipation	6/13	IC, R2, R6, R7, R9, R10
Gastroesophageal reflux	6/13	IC, R2, R5, R6, R7, R9
Abdominal pain	5/13	IC, R2, R7, R9, R10
Diarrhea	4/13	IC, R7, R9, R10
Nausea	4/13	IC, R2, R7, R9
Vomiting	2/13	R9, R10

IC: index case; R: relative.

Table 4 Extra-intestinal signs and symptoms of the extended family relatives of the index case.

Symptoms	n	Cases
Fatigue	10/13	R1, R2, R3, R4, R5, R6, R7, R8, R9, R10
Stress and anxiety	8/13	IC, R2, R3, R4, R5, R7, R9, R10
Sleep disturbances	8/13	IC, R3, R4, R5, R7, R8, R9, R10
Muscle cramps	8/13	R1, R2, R3, R4, R6, R7, R9, R11
Weakness	7/13	R2, R3, R4, R5, R6, R7, R9
Headache	7/13	R2, R3, R4, R5, R7, R9, R10
Depression	5/13	R2, R3, R4, R5, R10
Urticaria	4/13	R2, R5, R6, R7
Aphthous mouth ulcers	3/13	IC, R2, R9
Damaged tooth enamel	3/13	R5, R8, R9
Anorexia	3/13	IC, R7, R9
Dermatitis	3/13	IC, R5, R9
Weight loss	3/13	R1, R4, R11

IC: index case; R: relative.

option, given its high sensitivity and specificity (98-100%).⁴ Catassi and Fasano²⁵ proposed that CD diagnosis can be considered, if the patient has at least four of the five following criteria: typical signs and symptoms of CD, positive serology, risk genetics, intestinal villous atrophy (determined through biopsy), and response to a gluten-free diet. Thus, the majority (8/12) of the relatives of the index case (with previous CD diagnosis) presented with the clinical and serologic indicators that corresponded to the first three criteria mentioned. Only their response to a gluten-free diet would be lacking to consider them celiac patients.

An interesting datum in the present study was that 6/13 relatives, including the index case, had been diagnosed with bronchial asthma, possibly associated with the shared genetic and environmental conditions. Although the relation between CD and asthma has not been widely studied, there is evidence of their association. According to Tang et al.,²⁶ intraepithelial lymphocytes from biopsies of celiac patients express more cytosolic phospholipase A2 than their healthy counterparts. In addition, the NKG2D receptor expressed in lymphocytes can activate the intracellular cytosolic pathway of the p-cPLA2s, in the presence or not of IL-15, and mediating the release of arachidonic acid. That acid is a substrate of the 5-lipoxygenases and C4 leukotriene synthase that leads to the production of cysteinyl leukotrienes, responsible for enterocyte destruction. Said leukotriene

overproduction induces mucosal inflammation and causes the majority of inflammatory conditions that have previously been associated with allergies and asthma.²⁷ Thus, presenting with asthma could be a risk factor for triggering CD.

Some of the study participants (index case, R3, R5) had been treated with montelukast for bronchial asthma, but they suspended it due to medical recommendation and currently continue treatment with loratadine or chlorpheniramine. Montelukast is a drug that inhibits cysteinyl leukotrienes for the treatment of asthma symptoms. Its activity has been confirmed *in vitro* in intraepithelial lymphocytes, suppressing NKG2D cytotoxicity and inhibiting cysteinyl leukotriene production.²⁶ Even though this drug has not been approved for CD treatment, it is capable of blocking the T CD8+ cells that are responsible for causing intestinal damage. Therefore, its efficiency and safety for the treatment of CD is being evaluated in a phase II clinical trial.²⁸

Some epidemiologic studies have also examined the relation between asthma and CD. In a cohort of Italian children, an increased risk for CD development was found in those subjects that had a previous asthma diagnosis (IRR 1.37, 95% CI: 1.09-1.71). Antibiotic use, which has been related to both diseases, was not a confounding factor in the association.²⁹ To the contrary, in a Danish population cohort, it was

concluded that there was no increased risk for presenting with asthma, if the parents had CD.³⁰ Thus, asthma can be considered a predisposing factor to CD, but not vice versa. However, more studies are required to sustain the relation between CD and the inflammatory mechanisms triggered by asthma.

The study family naturally shared genetics and a hereditary background that predisposed to CD. Moreover, they lived in close proximity of each other, sharing environmental factors that could increase the risk for developing CD. The HLA-DQ2 haplotype and customs in upbringing, alimentation, and the treatment of illnesses could be determining factors in an increased risk for CD that the study family had. Another factor involved in the development of CD in several of the participants was asthma, which could trigger CD through inflammatory mechanisms. This has not yet been widely studied.

It is our conclusion that the majority of the relatives of the boy with celiac disease presented with CD indicators through the influence of the following factors: risk genetics, living in close proximity, sharing environmental conditions and cultural patterns, and the fact that some of the family members presented with asthma.

Ethical disclosures

Protection of human and animal subjects. The authors declare that no experiments were performed on humans or animals for this study.

Confidentiality of data. The authors declare that no patient data appear in this article.

Right to privacy and informed consent. The authors declare that no patient data appear in this article.

Financial disclosure

Sigala-Robles R. and Aguayo-Patrón S.V. received support from the Consejo Nacional de Ciencia y Tecnología (CONACYT), grants: 394851 and 377998, respectively.

Conflict of interest

The authors declare that there is no conflict of interest.

References

- Remes-Troche JM, Nuñez-Alvares C, Uscanga-Dominguez LF. Celiac disease in Mexican population: An update. *Am J Gastroenterol.* 2013;108:283–4.
- Gomez JC, Selvaggio GS, Viola M, et al. Prevalence of celiac disease in Argentina: Screening of an adult population in the La Plata area. *Am J Gastroenterol.* 2001;96:2700–4.
- Catassi C, Gatti S, Fasano A. The new epidemiology of celiac disease. *J Pediatr Gastroenterol Nutr.* 2014;59 Suppl 1:S7–9.
- Husby S, Koletzko S, Korponay-Szabó IR, et al. European Society for Pediatric Gastroenterology Hepatology, and Nutrition guidelines for the diagnosis of coeliac disease. *J Pediatr Gastroenterol Nutr.* 2012;54:136–60.
- Megiorni F, Mora B, Bonamico M, et al. HLA-DQ and risk gradient for celiac disease. *Hum Immunol.* 2009;70:55–9.
- Singh P, Arora S, Lal S, et al. Risk of celiac disease in the first- and second-degree relatives of patients with celiac disease: A systematic review and meta-analysis. *Am J Gastroenterol.* 2015;110:1539–48.
- Parra-Medina R, Molano-Gonzalez N, Rojas-Villarraga A, et al. Prevalence of celiac disease in Latin America: A systematic review and meta-regression. *PLoS One.* 2015;10:e0124040.
- Rubio-Tapia A, Kyle RA, Kaplan EL, et al. Increased prevalence and mortality in undiagnosed celiac disease. *Gastroenterology.* 2009;137:88–93.
- Collin P. Should adults be screened for celiac disease? What are the benefits and harms of screening? *Gastroenterology.* 2005;128:104–8.
- World Health Organization. Global database on body mass index. BMI classification [internet]. WHO; c2006-2017 [accessed 12 Jan 2017]. Available from: http://apps.who.int/bmi/index.jsp?introPage=intro_3.html
- World Health Organization. Growth reference 5-19 years. BMI-for-age (5-19 years). WHO. 2017 [accessed 12 Jan 2017]. Available from: http://www.who.int/growthref/who2007_bmi_for_age/en/
- Aguayo-Patrón S, Beltrán-Sauceda L, Calderón de la Barca AM. A population-wide applicable HLA-DQ2 and DQ8 genotyping using DNA from dried blood spots and duplex allele-specific qPCR amplification. *Scand J Clin Lab Invest.* 2016;76:581–7.
- Olerup O, Aldener A, Fogdell A. HLA-DQB1 and -DQA1 typing by PCR amplification with sequence-specific primers (PCR-SSP) in 2 hours. *Tissue Antigens.* 1993;41:119–34.
- Cabrera-Chávez F, Rouzaud-Sández O, Sotelo-Cruz N, et al. Bovine milk caseins and transglutaminase-treated cereal prolamins are differentially recognized by IgA of celiac disease patients according to their age. *J Agric Food Chem.* 2009;57:3754–9.
- Lebwohl B, Murray JA, Verdú EF, et al. Gluten introduction, breastfeeding, and celiac disease: Back to the drawing board. *Am J Gastroenterol.* 2016;111:12–4.
- Round JL, Mazmanian SK. The gut microbiome shapes intestinal immune responses during health and disease. *Nat Rev Immunol.* 2009;5:313–23.
- Mejía-León ME, Ruiz-Dyck KM, Calderón de la Barca AM. HLA-DQ genetic risk gradient for type 1 diabetes and celiac disease in northwestern Mexico. *Rev Gastroenterol Mex.* 2015;80:135–43.
- Karell K, Louka AS, Moodie SJ, et al. HLA types in celiac disease patients not carrying the DQA1*05-DQB1*02 (DQ2) heterodimer: Results from the European Genetics Cluster on Celiac Disease. *Hum Immunol.* 2003;64:469–77.
- Rodrigo L, Fuentes D, Riestra S, et al. Increased prevalence of celiac disease in first and second-grade relatives. A report of a family with 19 studied members. *Rev Esp Enferm Dig.* 2007;99:149–55.
- Olaiz G, Rivera J, Shamah T, et al. Encuesta nacional de salud y nutrición. Cuernavaca, México: Instituto Nacional de Salud Pública; 2006, editores. [accessed 12 Jan 2017]. Available from: <http://ensanut.insp.mx/informes/ensanut2006.pdf>
- Rivera-Dommarco J, Shamah-Levy T, Villalpando-Hernández S, et al. Encuesta nacional de nutrición 1999. Estado nutricional de niños y mujeres en México. Cuernavaca, México: Instituto Nacional de Salud Pública; 2001, editores. [accessed 12 Jan 2017]. Available from: <http://www.salud.gob.mx/unidades/cdi/documentos/nutricion.pdf>
- Troncone R, Kosova R. Short stature and catch-up growth in celiac disease. *J Pediatr Gastroenterol Nutr.* 2010;51:137–8.
- Weiss B, Skourikhin Y, Modan-Moses D, et al. Is adult height of patients with celiac disease influenced by delayed diagnosis? *Am J Gastroenterol.* 2008;103:1770–4.

24. Ramírez-Cervantes KL, Remes-Troche JM, Milke-García MP, et al. Characteristics and factors related to quality of life in Mexican Mestizo patients with celiac disease. *BMC Gastroenterol.* 2015;15:4.
25. Catassi C, Fasano A. Celiac disease diagnosis: Simple rules are better than complicated algorithms. *Am J Med.* 2010;123:691–3.
26. Tang F, Chen Z, Ciszewski C, et al. Cytosolic PLA2 is required for CTL-mediated immunopathology of celiac disease via NKG2D and IL-15. *J Exp Med.* 2009;206:707–19.
27. Tang F, Sally B, Lesko K, et al. Cysteinyl leukotrienes mediate lymphokine killer activity induced by NKG2D and IL-15 in cytotoxic T cells during celiac disease. *J Exp Med.* 2015;10:1487–95.
28. Pilot study of montelukast in celiac disease [internet]. Chicago: The University of Chicago Celiac Disease Center; 2017 [accessed 12 Jan 2017]. Available from: <http://www.cureceliacdisease.org/ongoing-studies/>
29. Canova C, Pitter G, Ludvigsson JF, et al. Coeliac disease and asthma association in children: The role of antibiotic consumption. *Eur Respir J.* 2015;46:115–22.
30. Andersen AB, Erichsen R, Kappelman MD, et al. Parental celiac disease and risk of asthma in offspring: A Danish nationwide cohort study. *Clin Epidemiol.* 2015;7:37–44.