

1. Díaz C, Garzón S, Morales C, et al. Pancreatitis aguda grave. *Rev Colomb Cir.* 2012;27:281–9.
2. Köller J, Valenzuela V. Necrosectomía pancreática endoscópica. *Rev Gastroenterol.* 2013;33:329–34.
3. Coronel E, Czul F, Gelrud A. Manejo endoscópico de las complicaciones de la pancreatitis. *Rev Gastroenterol.* 2013;33:237–45.
4. Cunha EF, Rocha MS, Pereira FP, et al. Walled-off pancreatic necrosis and other current concepts in the radiological assessment of acute pancreatitis. *Radiol Bras.* 2014;47:165–75.
5. Vila JJ, Ruiz-Clavijo D, Gonzalez B. Manejo endoscópico de las colecciones pancreáticas. *Enfermedades comunes del páncreas.* 2015;18:17–36.
6. Poves I, Burdío F, Dorcaratto D, et al. Minimally invasive techniques in the treatment of severe acute pancreatitis. *Cent Eur J Med.* 2014;9:580–7.
7. Navarrete C, Richter H, Osorio J, et al. Wide percutaneous access to retroperitoneal pancreatic necrosis through fully covered self-expandable metal stent. *Gastrointest Endosc.* 2016;83:17–24.
8. Uhl W, Warshaw A, Imrie C, et al. IAP guidelines for the surgical management of acute pancreatitis. *Pancreatol.* 2002;2:565–73.
9. Fernández-Cruz L, Lozano-Salazar RR, Olvera C, et al. Pancreatitis aguda grave: alternativas terapéuticas. *Rev Cir Esp.* 2006;80:64–71.
10. Li JW, Ang TL. Is endoscopic necrosectomy the way to go? *Int J Gastrointest Interv.* 2016;5:193–8.

J. Mendoza<sup>a</sup>, G. Tovar<sup>b</sup>, M. Galvis<sup>c</sup>, M. Mendoza<sup>d</sup>, C. Lozano<sup>e,\*</sup>

<sup>a</sup> *Departamento de Cirugía Gastrointestinal, Clínica Foscal y Clínica Foscal Internacional, Floridablanca, Santander, Colombia*

<sup>b</sup> *Departamento de Gastroenterología Clínica, Clínica Foscal y Clínica Foscal Internacional, Floridablanca, Santander, Colombia*

<sup>c</sup> *Departamento de Radiología, Clínica Foscal y Clínica Foscal Internacional, Floridablanca, Santander, Colombia*

<sup>d</sup> *Departamento Clínico, Clínica Foscal y Clínica Foscal Internacional, Floridablanca, Santander, Colombia*

<sup>e</sup> *Clínica Foscal, Universidad de Cartagena, Floridablanca, Santander, Colombia*

\*Corresponding author. Carrera 28 # 40-64, Bucaramanga, Santander, Colombia. Tel.: +57 321 455 7352

E-mail address: [camilolozanocirugia@hotmail.com](mailto:camilolozanocirugia@hotmail.com)

(C. Lozano).

2255-534X/ © 2019 Asociación Mexicana de Gastroenterología.

Published by Masson Doyma México S.A. This is an open access article under the CC BY-NC-ND license (<http://creativecommons.org/licenses/by-nc-nd/4.0/>).

## Lichen planus with esophageal involvement<sup>☆</sup>



### Liquen plano con afectación esofágica

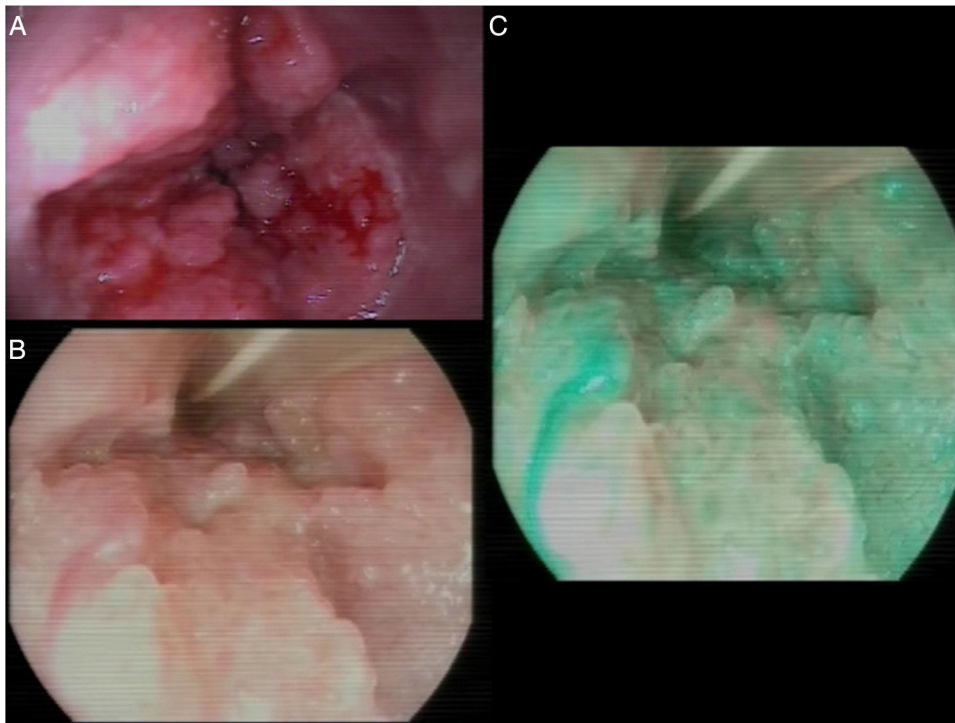
Lichen planus is an inflammatory disease of unknown etiology that affects the squamous epithelium of the skin and mucosae and less frequently involves the esophagus.<sup>1</sup> Oral cavity compromise supposes a risk factor for the development of squamous cell carcinoma, but there is less information on the potential malignancy from esophageal involvement.

A 69-year-old woman, nonsmoker, nondrinker, sought medical attention for dysphagia. She had been diagnosed with lichen planus at different mucosal locations and presented with secondary urethral stricture that required intervention. Several years earlier, under dysphagia follow-up at another center, she presented with various esophageal strictures secondary to lichen planus that required successive endoscopic dilations. Treatment with corticoids was begun, but was suspended due to intolerance, and so the patient only had endoscopic follow-up. During the control endoscopies, the presence of squamous cell papillomas was observed in the distal third of the esophagus. They were resected endoscopically, and argon plasma therapy was car-

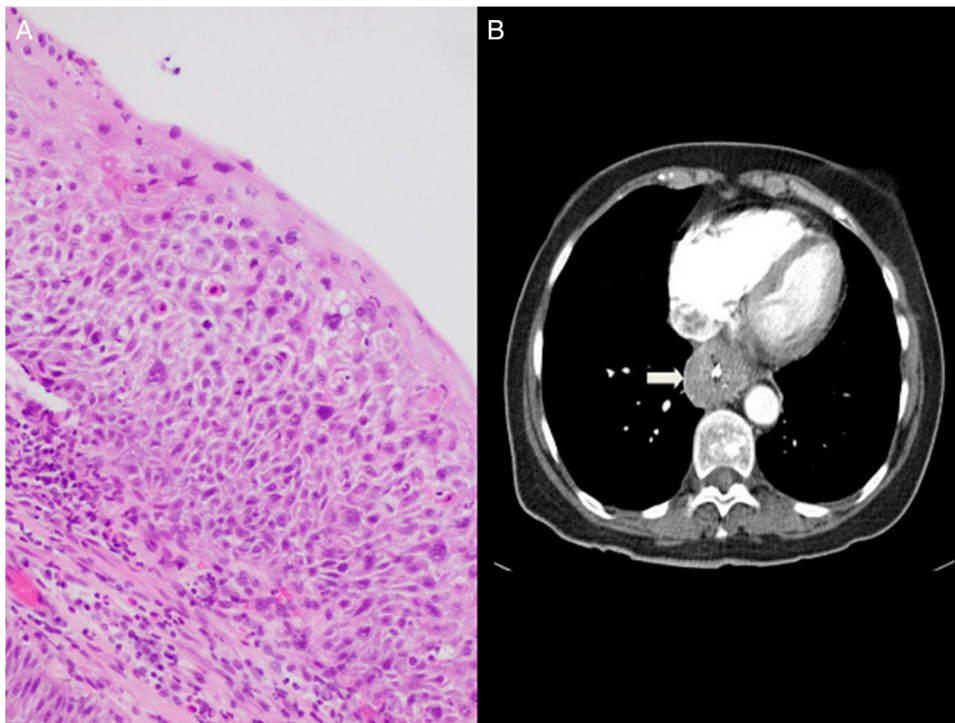
ried out. The patient suspended follow-up and came to our center six months later due to dysphagia to both solids and liquids. Endoscopy was performed, revealing a mamillated neoformation of increased consistency, 30 cm from the dental arcade, that caused stricture at the lumen and impeded the passage of the endoscope (fig. 1. A-C). Several biopsies were taken that were diagnosed as papillary squamous cell lesions, with areas of severe dysplasia/intraepithelial squamous cell carcinoma (fig. 2A). The biopsy samples underwent PCR testing to detect human papillomavirus (HPV) and were negative. Evaluation was completed with a CT scan of the chest and abdomen that identified thickening of the distal esophageal walls and gastric fundus, with no other remarkable alterations (fig. 2B). Given those findings, the multidisciplinary committee decided to administer neoadjuvant treatment with chemoradiotherapy and then surgical treatment through esophagectomy. There were no signs suggestive of malignancy in the anatomopathologic specimen.

The appearance of esophageal lichen planus is usually associated with cutaneous or oral involvement, but its presentation can be isolated.<sup>2</sup> The majority of patients with lichen planus of the esophagus are middle-aged women. Fox et al. studied 72 patients with esophageal lichen planus, 87% of whom were women, with a mean age of 61.9 years.<sup>1</sup> Dysphagia is the predominant symptom in the majority of patients.<sup>3</sup> Medical treatment can include corticoids, as well as other immunosuppressants, albeit their use is not well-standardized. At endoscopy, involvement can be in the proximal esophagus, which is the most frequent, as well as in the distal portion.<sup>1</sup> In the case presented herein, the patient was a woman with oral and cutaneous lichen planus of long evolution whose initial symptom was dysphagia, but the stricture was located in the distal esophagus.

<sup>☆</sup> Please cite this article as: Honrubia-López R, Manceñido-Marcos N, Pajares-Villarroya R, Muñoz-Fernández de Legaria M, Comas-Redondo C. Liquen plano con afectación esofágica. *Revista de Gastroenterología de México.* 2020;85:97–99.



**Figure 1** A) Endoscopic findings at the diagnosis of the stricture-causing neoplasm. B) Detail of the mucosal surface with a papillomatous aspect. C) Detail of the mucosal surface seen with I-Scan 3 virtual chromoendoscopy.



**Figure 2** A) Histologic findings showing severe dysplasia/intraepithelial squamous cell carcinoma. B) Radiologic findings of the CT scan of the chest and abdomen. Arrow: Thickening of the distal esophagus.

Endoscopic findings can include friable mucosa, whitish papules, erosions, and single or multiple strictures.<sup>4</sup> If strictures are found, as in our case, endoscopic treatment with dilations may be necessary. The potential for malig-

nancy of lichen planus at other locations, such as the oral cavity, has been well-known for several years,<sup>5</sup> but few cases of malignant transformation of lichen planus with esophageal involvement have been reported.<sup>6</sup> The presence

of esophageal papillomatosis is a rare endoscopic finding, the origin of which is the presence of gastroesophageal reflux, human papillomavirus (HPV), or continuous aggressions to the mucosa. In our patient, human papillomavirus (HPV) was ruled out, and compromise due to lichen planus could be considered a chronically irritating agent that predisposed to the development of esophageal papillomatosis, but there are no similar reports in the literature. Endoscopic treatment of papillomas is controversial, but the extirpation of isolated lesions through customary endoscopic techniques (biopsy forceps, polypectomy snare, fulguration) is accepted.<sup>7</sup> Nevertheless, the treatment of multiple lesions is not well-established, with some authors employing radiofrequency.<sup>8</sup> Once papillomas are extirpated, their recurrence is low,<sup>9</sup> but they recurred in our patient despite several previous extirpations attempts. In cases of squamous cell carcinoma of the esophagus, causal factors such as smoking, alcohol, and HPV infection should be considered.<sup>10</sup> The only recognizable etiologic factor in our patient was the presence of lichen planus. Endoscopy could play a role in the follow-up of those patients for the early detection of squamous cell carcinoma, utilizing both chromoendoscopy and magnification endoscopy. Dysplasia in samples of the mucosa with a lichenoid infiltrate may not be detected in all cases, but in our patient, areas of severe dysplasia/intraepithelial squamous cell carcinoma were clearly identified. The patient began neoadjuvant treatment with chemoradiotherapy, which could explain the absence of dysplastic/intraepithelial squamous cell carcinoma in the specimen studied after esophagectomy.

In conclusion, lichen planus with esophageal involvement is a rare entity that should be suspected in middle-aged women with dysphagia and a history of lichen planus at other sites. Although it is an uncommon pathology, it is potentially malignant, as in the case presented herein and the few other published cases, which could justify endoscopic follow-up.

## Ethical considerations

The patient signed a statement of informed consent before the present article was sent to be considered for publication.

The work meets current bioethical regulations. It was not reviewed by an ethics committee, given that the patient was informed as to the anonymous use of clinical data, as well as endoscopic and radiologic images, in which she could not be identified. In addition, she signed a corresponding statement of informed consent.

The authors declare that the present article contains no personal information that could identify the patient.

## Financial disclosure

No financial support was received in relation to the present article.

## Conflict of interest

The authors declare that there is no conflict of interest.

## References

1. Fox LP, Lightdale CJ, Grossman ME. Lichen planus of the esophagus: what dermatologists need to know. *J Am Acad Dermatol.* 2011;65:175–83.
2. Aubert, Hammel A, Perniceni Tet al. Epidermoid carcinoma complicating esophageal lichen planus without cutaneous or oral involvement. *Gastrointest Endosc.* 2011;74:221–3.
3. Katzka DA, Smyrk TC, Bruce AJ, et al. Variations in presentations of esophageal involvement in lichen planus. *Clin Gastroenterol Hepatol.* 2010;8:777–82.
4. Chrysostalis A, Gaudric M, Terris B, et al. Esophageal lichen planus: A series of eight cases including a patient with esophageal verrucous carcinoma: a case series. *Endoscopy.* 2008;40:764–8.
5. Moncarz V, Ulmanky M, Lustmann J. Lichen planus: exploring its malignant potential. *J Am Dent Assoc.* 1993;124:102–8.
6. Schwartz MP, Sigurdsson V, Vreuls W, et al. Two siblings with lichen planus and squamous cell carcinoma of the oesophagus. *Eur J Gastroenterol Hepatol.* 2006 Oct;18:1111–5.
7. Tabatabaei SA, Moghadam NA, Ahmadinejad M, et al. Giant esophageal squamous papilloma: a case report. *J Dig Dis.* 2009;10:228–30.
8. Kibria R, Akram S, Moezzi J, et al. Esophageal squamous papillomatosis with dysplasia Is there a role of balloon-based radiofrequency ablation therapy? *Acta Gastroenterol Belg.* 2009;72:373–6.
9. Mosca S, Manes G, Monaco R, et al. Squamous papilloma of the esophagus: long-term follow up. *J Gastroenterol Hepatol.* 2001;16:857–61.
10. Chang F, Syrjanen S, Wang L, et al. Infectious agents in the etiology of esophageal cancer. *Gastroenterology.* 1992;103:1336–48.

R. Honrubia-López<sup>a,\*</sup>, N. Manceñido-Marcos<sup>a</sup>,  
R. Pajares-Villarroya<sup>a</sup>, M. Muñoz-Fernández de Legaria<sup>b</sup>,  
C. Comas-Redondo<sup>a</sup>

<sup>a</sup> *Servicio de Aparato Digestivo, Hospital Universitario Infanta Sofía, San Sebastián de los Reyes, Madrid, Spain*

<sup>b</sup> *Servicio de Anatomía Patológica, Hospital Universitario Infanta Sofía, San Sebastián de los Reyes, Madrid, Spain*

\*Corresponding author. Paseo de Europa 34, San Sebastián de los Reyes, Madrid, Spain. Tel.: +34 911914000  
E-mail address: [raul.honru@gmail.com](mailto:raul.honru@gmail.com) (R. Honrubia-López).  
2255-534X/ © 2019 Asociación Mexicana de Gastroenterología.  
Published by Masson Doyma México S.A. This is an open access article under the CC BY-NC-ND license (<http://creativecommons.org/licenses/by-nc-nd/4.0/>).