

References

- Eghdami L, Kwon J. Peritoneal tuberculosis presenting as persistent ascites. *J Obstet Gynaecol Can.* 2015;37:295.
- Piura B, Rabinovich A, Leron E, et al. Peritoneal tuberculosis mimicking ovarian carcinoma with ascites and elevated serum CA-125: Case report and review of literature. *Eur J Gynaecol Oncol.* 2002;23:120–2.
- Akgun Y. Intestinal and peritoneal tuberculosis: changing trends over 10 years and a review of 80 patients. *Can J Surg.* 2005;48:131–6.
- Uzunkoy A, Harma M, Harma M. Diagnosis of abdominal tuberculosis: Experience from 11 cases and review of the literature. *World J Gastroenterol.* 2004;10:3647–9.
- Fariás Llamas OA, López Ramírez MK, Morales Amezcua JM, et al. Peritoneal and intestinal tuberculosis: an ancestral disease that poses new challenges in the technological era. Case report and review of the literature. *Rev Gastroenterol Mex.* 2005;70:169–79.
- Mukhopadhyay A, Dey R, Bhattacharya U. Abdominal tuberculosis with an acute abdomen: Our clinical experience. *J Clin Diagn Res.* 2014;8:NC07–9.
- Khan R, Abid S, Jafri W, et al. Diagnostic dilemma of abdominal tuberculosis in non-HIV patients: An ongoing challenge for physicians. *World J Gastroenterol.* 2006;12:6371–5.
- Goyal N, Khurana N. Tuberculosis of the appendix: An unusual occurrence with review of literature. *ANZ J Surg.* 2009;79:662.
- Dogru T, Sonmez A, Tasci I, et al. Perforated tuberculous appendicitis and peritoneal tuberculosis. *East Mediterr Health J.* 2008;14:742–4.
- Konishi H, Kuwahara O, Miyazaki M, et al. A case of tuberculous mesenteric lymphadenitis and peritonitis with symptoms of acute abdomen. *Kekkaku.* 1995;70:117–20.
- Chahed J, Mekki M, Mansour A, et al. Contribution of laparoscopy in the abdominal tuberculosis diagnosis: Retrospective study of about 11 cases. *Pediatr Surg Int.* 2010;26:413–8.
- Martín-Fortea MP, Aibar MA, de Escalante B, et al. Peritoneal tuberculosis: A 16-year review in a general hospital. *Enferm Infecc Microbiol Clin.* 2010;28:162–8.

P.C. González-Ferrer^a, Z.R. Romero-Amaro^{a,b},
M.V. Rivas-Castillo^a, P.A. Reyes-Duran^a,
G.J. Arismendi-Morillo^{a,c,*}

^a Pathologic Anatomy Service and Postgraduate,
Hospital General del Sur "Dr. Pedro Iturbe", Maracaibo,
Zulia, Venezuela

^b Citopathology Course, School of Medicine-Universidad del
Zulia, Maracaibo, Zulia, Venezuela

^c Biologic Research Institute, School of
Medicine-Universidad del Zulia, Maracaibo, Zulia,
Venezuela

*Corresponding author. Servicio y Postgrado de Anatomía
Patológica, Hospital General del Sur "Dr. Pedro Iturbe".
Maracaibo, Venezuela. Tel.: +58-261-7597250.

E-mail address: gabrielarismendi@gmail.com
(G.J. Arismendi-Morillo).

2255-534X/

© 2016 Asociación Mexicana de Gastroenterología. Published by
Masson Doyma México S.A. This is an open access article under the
CC BY-NC-ND license (<http://creativecommons.org/licenses/by-nc-nd/4.0/>).

Intestinal obstruction in adults due to ileal intussusception secondary to inflammatory fibroid polyp: A case report[☆]



Oclusión intestinal en el adulto por intususcepción ileal secundaria a pólipo fibroide inflamatorio: reporte de un caso

Intussusception is an invagination of the intestinal wall into the lumen of the adjacent segment. It is uncommon in adults, responsible for only 1% of cases of intestinal obstruction. It is mainly caused by a neoplastic lesion in the intestinal wall, forming a prominence in the lumen that is displaced during peristalsis.^{1–3}

Inflammatory fibroid polyp (IFP) is an uncommon benign lesion of the gastrointestinal tract that usually presents in the sixth decade of life. It affects both sexes, is generally solitary and sessile, measures from 2–5 cm, and originates in

the submucosa. IFP etiology is multifactorial and is associated with trauma, allergy, bacterial infection, and physical and chemical agents.^{4,5}

A 58-year-old woman with high blood pressure and dyslipidemia presented with non-radiating colicky abdominal pain of 4-month progression located in the epigastrium. Pain was associated with food ingestion and the patient had a 12-kg weight loss. She came to the emergency department due to intense exacerbation of the pain, abdominal distension, diarrheic stools, and vomiting. Physical examination revealed pale teguments, dehydration, and tachycardia. A deep, mobile, and painful tumor was palpated and so imaging studies were ordered. The Doppler ultrasound study showed a right, well defined, paraovarian cystic lesion measuring 48 x 40 x 41 mm with no evidence of vascularity. An abdominal computerized tomography (CT) scan identified a loss of morphology in the terminal ileum, characterized by the absence of folds, a thinning of the wall, retraction and invagination of the adjacent mesentery, and dilated bowel segments, resulting in the diagnosis of intussusception (fig. 1a). An exploratory laparotomy revealed ileo-ileal intussusception (fig. 1b and c) 1 meter from the ileocecal valve that compromised 70 cm of bowel segment. The affected bowel segment was resected and an end-to-end anastomosis was performed.

The morphologic analysis of the surgical specimen upon cutting revealed a bright red polypoid lesion partially covered by congestive mucosa that measured 6.3 x 2.9 cm and the histologic study identified a submucosal lesion made

[☆] Please cite this article as: Forasté-Enríquez CF, Mata-Hernández R, Hernández-Villaseñor A, Alderete-Vázquez G, Grube-Pagola P. Oclusión intestinal en el adulto por intususcepción ileal secundaria a pólipo fibroide inflamatorio: reporte de un caso. *Revista de Gastroenterología de México.* 2017;82:263–265.

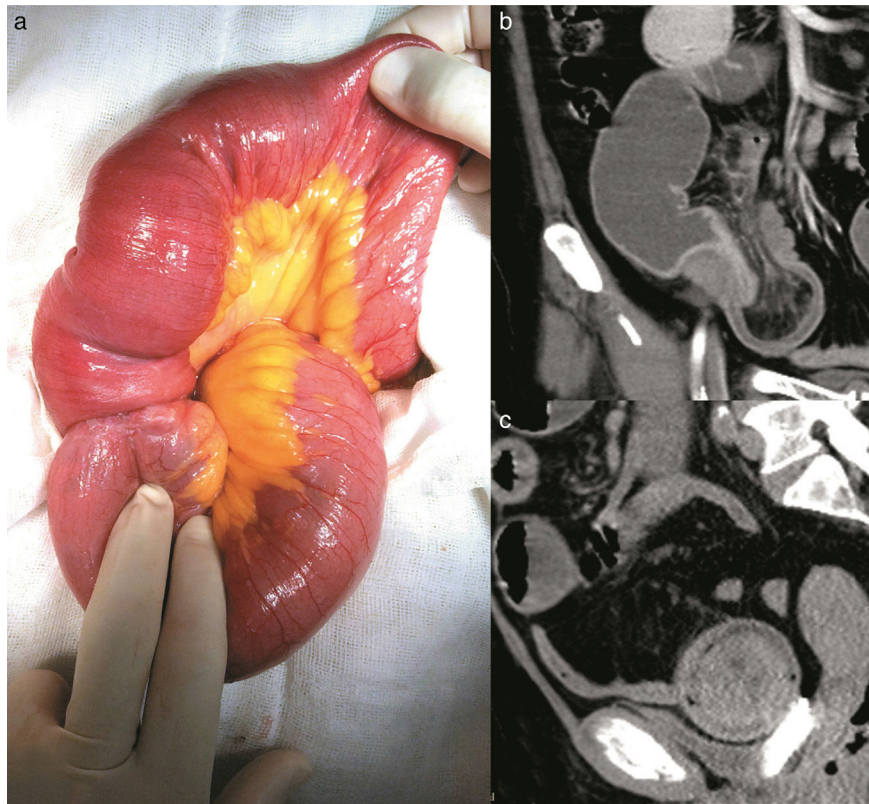


Figure 1 (a) Small bowel segment with ileo-ileal intussusception, (b) Coronal view of contrast-enhanced CAT scan showing retraction of fat and mesenteric vessels, and (c) Sagittal view of contrast-enhanced CAT scan showing the "target sign" image.

up of thick collagen bundles, ovoid nuclei with disperse granular chromatin intermixed with lymphocytes, plasma cells, eosinophils, and polymorphonuclear cells. The immunoprofile was positive for CD34, negative for smooth muscle actin (SMA), ALK1, CD117, and Ki67 (fig. 2). Diagnosis was ulcerated IFP with secondary ileal intussusception. The patient was released 7 days after surgery. She was re-evaluated 3 weeks later and showed good progression, passing gases and having bowel movements.

Intussusception in adults is uncommon and is associated with up to 90% of the cases of tumors located in the lumen, or is of idiopathic origin.⁶ The clinical manifestations are diverse, and can be acute, intermittent, or chronic. Bowel obstruction data are generally nausea, vomiting, and abdominal pain in benign neoplastic processes. Melena presents in malignant lesions.² Depending on their location, they are classified as: ileo-colic, colo-colic, and entero-enteric (jejuno-jejunal, ileo-ileal).^{4,7} Imaging studies are essential for intussusception diagnosis and CT is the most precise method, demonstrating the presence of intraluminal bowel segments with or without the presence of fat and mesenteric vessels, as well as the classic "target sign", which is the clear doughnut-shaped mass due to edema, in the transverse views.^{2,3,8}

Treatment is almost always surgical in adults, compared with children, and invariably involves resection of the affected bowel segment together with primary anastomosis.⁷

IFP is a rare lesion of the gastrointestinal tract and was first described by Vanek in 1949. Also known as inflammatory pseudotumor (IP) or eosinophilic granuloma, IFP is often an incidental discovery during endoscopic procedures or laparotomies. It is generally asymptomatic, but may present with symptoms depending on its location. Its most frequent sites are the stomach (66-75%) and small bowel (18-20%). In the latter location, as in our patient, IFP can cause intussusception in 5-16% of cases.^{4,9}

IFP can be confused with inflammatory myofibroblastic tumor (IMFT) because both were commonly called inflammatory pseudotumor or eosinophilic granuloma. They are histologically different entities. IFPs have more eosinophils, fibrosis, and fewer lymphoid cells than IMFTs. IFPs originate in the submucosa and do not involve the serosa or muscle layer, sites that are generally affected by IMFTs. The immunohistochemical profile of the two lesions is also different: IFPs express CD34, whereas IMFTs express ALK1, smooth muscle actin, and sometimes CD117. It is important to differentiate between the two lesions, given that IFPs do not present with recurrence, whereas IMFTs tend to relapse.¹⁰

We present herein a case of IFP that caused intussusception and in which immunohistochemical reactions were used to make the correct diagnostic classification. This is the first case of intussusception secondary to IFP reported in Mexico.

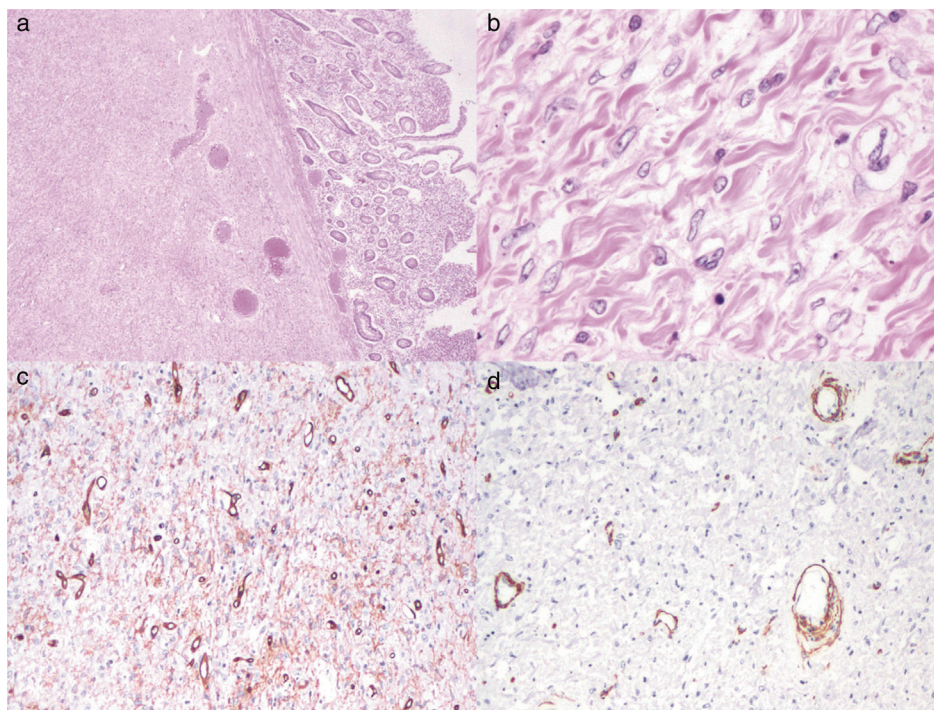


Figure 2 (a) Histologic slice showing an ulcerated lesion located in the submucosa (hematoxylin & eosin stain x2). (b) Thick collagen bundles and spindle cells with fine granular chromatin nuclei are seen in the lesion (hematoxylin & eosin stain, x40). (c) Immunoreaction positive for CD34. (d) Negative smooth muscle actin.

Financial disclosure

No financial support was received in relation to this article.

Conflict of interest

The authors declare that there is no conflict of interest.

References

1. Nkwam N, Desai A, Radley S. Adult idiopathic jejuno-ileal intussusception. *BMJ Case Rep.* 2010;2010, bcr0520103050.
2. Azar T, Berger DL. Adult intussusception. *Ann Surg.* 1997;226:134–8.
3. Kim YH, Blake MA, Harisinghani MG, et al. Adult intestinal intussusception: CT appearances and identification of a causative lead point. *Radiographics.* 2006;26:733–44.
4. Akbulut S. Intussusception due to inflammatory fibroid polyp: A case report and comprehensive literature review. *World J Gastroenterol.* 2012;18:5745–52.
5. Abboud B. Vanek's tumor of the small bowel in adults. *World J Gastroenterol.* 2015;21:4802–8.
6. Yalamarthi S, Smith RC. Adult intussusception: Case report and review of literature. *Postgrad Med J.* 2005;81:174–7.
7. Soni S, Moss P, Jaiganesh T. Idiopathic adult intussusception. *Int J EmergMed.* 2011;4:8.
8. Zumarán O, Robles C, Villarreal P, et al. Intususcepción en el adulto. *An Med (Mex).* 2006;51:188–92.
9. O'Kane A, O'Donnell M, McCavert M, et al. Inflammatory fibroid polyp of the ileum causing recurrent intussusception and chronic ischaemia: A case report. *Cases J.* 2008;1:244.
10. Makhoulf HR, Sobin LH. Inflammatory myofibroblastic tumors (inflammatory pseudotumors) of the gastrointestinal tract: How closely are they related to inflammatory fibroid polyps? *Hum Pathol.* 2002;33:307–15.

C.F. Forasté-Enríquez^a, R. Mata-Hernández^b,
A. Hernández-Villaseñor^a, G. Alderete-Vázquez^b,
P. Grube-Pagola^{c,*}

^a Department of General Surgery, UMAE 14 IMSS, Ver., Veracruz, Mexico

^b Pathologic Anatomy Office "Dra. Isabel Ruiz Juárez", Veracruz, Ver., Mexico

^c Department of Pathology, UMAE 14 IMSS, Veracruz, Ver., Mexico

* Corresponding author. Xicotencatl 1266-5, Col. Ricardo Flores Magón, Veracruz, Ver., Mexico. Tel.: (229)9317579.

E-mail address: grubejr78@gmail.com (P. Grube-Pagola). 2255-534X/

© 2016 Asociación Mexicana de Gastroenterología. Published by Masson Doyma México S.A. This is an open access article under the CC BY-NC-ND license (<http://creativecommons.org/licenses/by-nc-nd/4.0/>).