



CLINICAL IMAGE IN GASTROENTEROLOGY

Cholangitis mimicking hilar cholangiocarcinoma



Colangitis imitando al colangiocarcinoma hilar

A 51-year-old man was evaluated for obstructive jaundice associated with mild dyspepsia. He had an unremarkable past medical history and physical examination revealed no significant findings except for jaundice. Laboratory test results showed altered liver enzymes (total bilirubin 20.1 mg/dl, direct bilirubin 18.8 mg/dl, AST 53U/l, ALT 144 U/l, GGT 386 U/l, ALP 203 U/l). A computed tomography (CT) scan and subsequent magnetic resonance cholangiopancreatography (MRCP) demonstrated a 1.2 cm hilar mass, which constituted hilar stricture and occlusion of the biliary tract and its dilation in the intrahepatic area (fig. 1), suggesting hilar cholangiocarcinoma (Bismuth-Corlette II). Percutaneous cholangiography for internal-external biliary drainage confirmed the hilar stricture (fig. 2A); cholangiography performed 10 days later showed its normalization (fig. 2B). The patient underwent cholangioscopy that confirmed a normal biliary duct at the hilum (fig. 3) and endobiliary forceps biopsies were taken in the same session. The histopathologic evaluation revealed transmural chronic inflammatory cell infiltrates, with no signs of malignancy. Immunohistochemical staining showed IgG4-positive plasma cells (figs. 4 A and B). MRCP at 6 months confirmed a normal biliary tree (fig. 5).

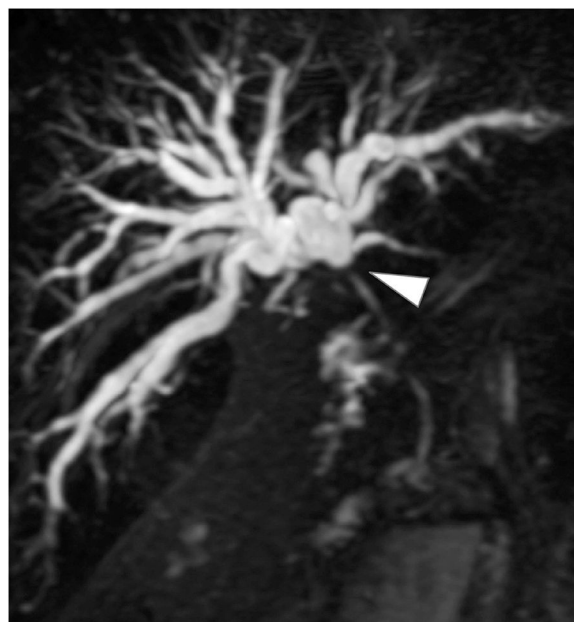


Figure 1 Coronal magnetic resonance cholangiopancreatography (MRCP) reconstruction showing biliary tract occlusion due to a hilar stricture (arrowhead) and dilation of the intrahepatic biliary tree.

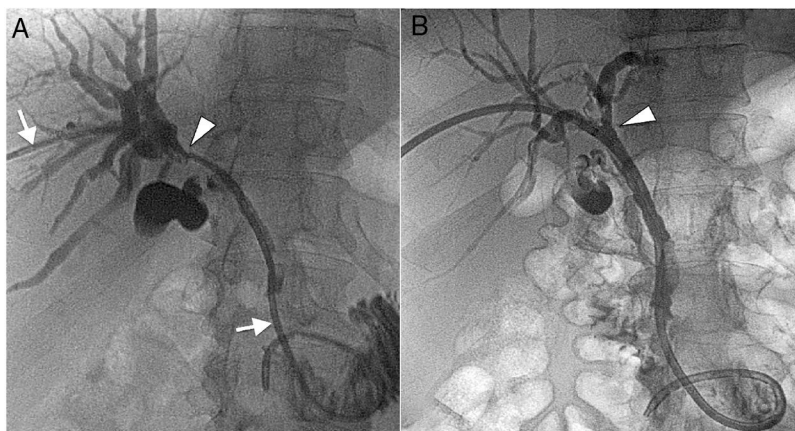


Figure 2 A) Cholangiography for percutaneous internal-external biliary drainage (arrows) confirming a hilar stricture (arrowhead). B) Cholangiography at 10 days shows a normalized situation, with no more hilar stricture (arrowhead).



Figure 3 Cholangioscopy at the level of the biliary duct at the hilum that demonstrates normal anatomy of the area of confluence of the right (#) and left (*) hepatic biliary duct.

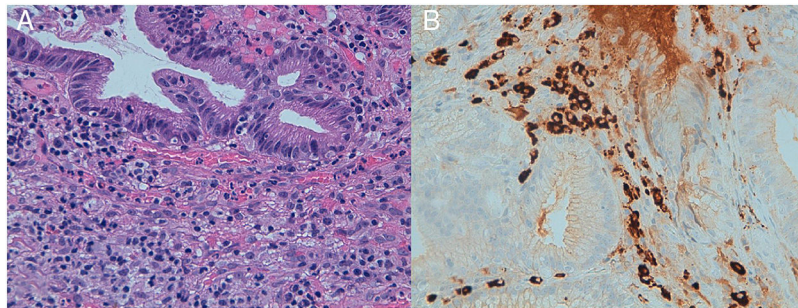


Figure 4 A and B: Biopsies of the proximal bile duct with superficial erosions and interstitial chronic inflammatory infiltrates.

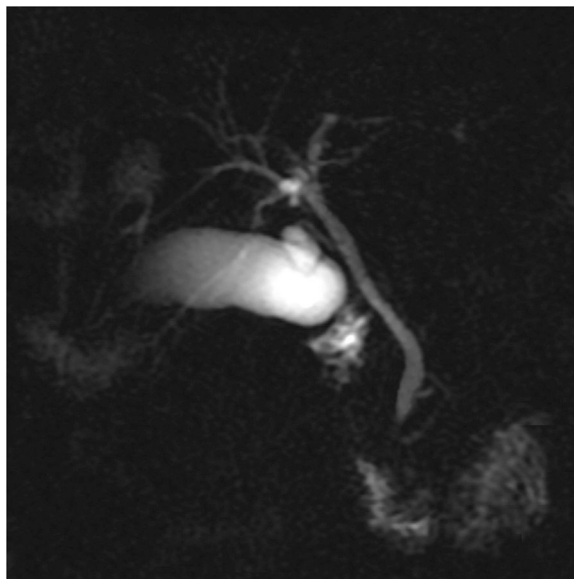


Figure 5 Coronal magnetic resonance cholangiopancreatography (MRCP) reconstruction showing a normal biliary tree.

Financial disclosure

No financial support was received in relation to this article.

Conflict of interest

The authors declare that there is no conflict of interest.

A. Barberis^{a,*}, U.G. Rossi^b, M. Filauro^a

^a *Unidad de Cirugía General y Hepatobiliar, Departamento de Cirugía Abdominal, Ente Ospedaliero Ospedali Galliera, Genoa, Italy*

^b *Unidad de Radiología Intervencionista, Departamento de Diagnóstico por Imagen, Ente Ospedaliero Ospedali Galliera, Genoa, Italy*

*Corresponding author. Unidad de Cirugía General y Hepatobiliar, Departamento de Cirugía Abdominal, Ente Ospedaliero Ospedali Galliera, Mura delle Cappuccine, 14, 16128, Genoa, Italy. Phone: -39 010 5634210; Fax: +-39 010 57481312.

E-mail address: andrea.barberis@unige.it (A. Barberis).