



CLINICAL IMAGE IN GASTROENTEROLOGY

A different kind of polyp[☆]

Un tipo de pólipo diferente

C. Leal*, M. Silva, I. Cotrim

Departamento de Gastroenterología, Centro Hospitalar de Leiria, Leiria, Portugal



A 67-year-old man had a surgical consultation due to presenting with anorexia, meteorism, and alternating bowel habits (diarrhea-predominant) that had started 3 months before. He did not complain of fever, weight loss, or abdominal pain. His past medical history was significant for appendectomy. A colonoscopy revealed multiple small

(<1 cm) non-ulcerated polypoid lesions –lymphomatous polyposis– extending from the ileocecal valve to the cecum (Fig. 1). The polyps were sessile, diminutive, and regular-shaped. The remaining colonic mucosa was unremarkable. Biopsies of the aforementioned polyps revealed small atypical lymphocytes and rare macrophages. Immunophenotypic

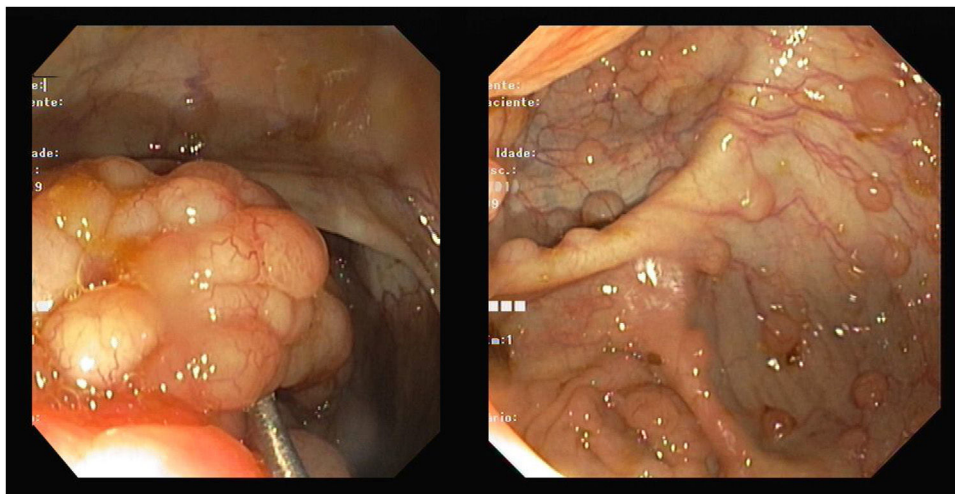


Figure 1 Cecal lymphomatous polyposis in white-light endoscopy.

[☆] Please cite this article as: Leal C, Silva M, Cotrim I, Un tipo de pólipo diferente, Revista de Gastroenterología de México. 2022;87:380–381.

* Corresponding author at: Departamento de Gastroenterología, Centro Hospitalar de Leiria, Rua das Olhalvas, Leiria 2410-197, Portugal. Tel: + 351244817000.

E-mail address: carina.leal@chleiria.min-saude.pt (C. Leal).

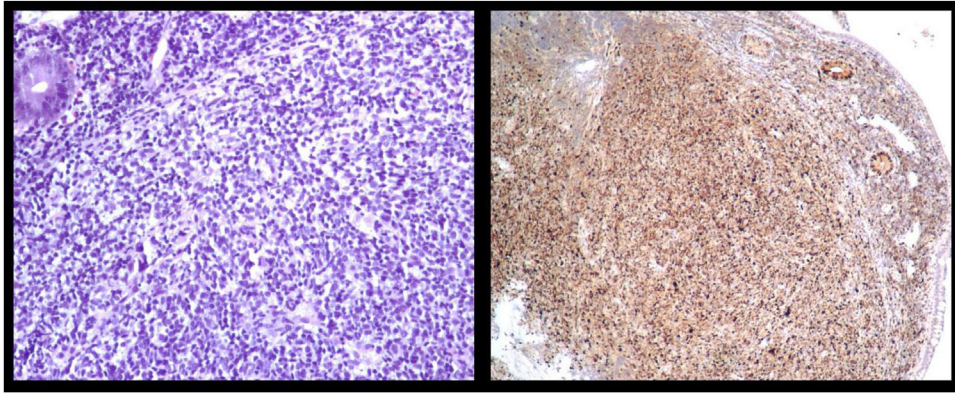


Figure 2 Population of small lymphoid cells ($\times 100$) (left side) and cyclin D1 immunostaining showing nuclear expression in the cells ($\times 100$) (right side).

analysis showed CD20, BCL2, BCL6, CD5, and cyclin D1 expression (Fig. 2). A positron emission tomography scan was positive for disseminated nodal involvement. Stage IV-A mantle cell lymphoma was diagnosed. The patient was started on rituximab and bendamustine, achieving remission. Mantle cell lymphoma is a subtype of B-cell non-Hodgkin lymphoma that commonly affects the gastrointestinal tract, particularly the ileocecal region.¹ Approximately 10% present as lymphomatous intestinal polyposis that may resemble polypoid syndromes on endoscopy.² The tumor is chemo-responsive. Most cases present at an advanced stage and the 5-year survival rate is 60%.³

Ethical considerations

The authors have the informed consent of the patient for the publication of his data/images. The institution's ethics committee was not involved, this clinical image is not part of a research study that requires authorization.

Financial disclosure

No financial support was received in relation to this article.

Conflict of interest

The authors declare that there is no conflict of interest.

Acknowledgements

We gratefully acknowledge the histology/imaging provided by Cunha MF.

References

1. Coste-Murillo P, Villalobos-Garita A, Rojas-Mena B. Linfoma del manto colónico inusual. *Endoscopia*. 2016;28:170–3, <http://dx.doi.org/10.1016/j.endomx.2016.08.002>.
2. Nassri R, Nassri A, Alkhasawneh A, et al. Colonic mantle cell lymphoma with multiple lymphomatous polyposis. *GE Port J Gastroenterol*. 2020;27:296–8, <http://dx.doi.org/10.1159/000505033>.
3. Dreyling M, Campo E, Hermine O, et al. Newly diagnosed and relapsed mantle cell lymphoma: ESMO Clinical Practice Guidelines for diagnosis, treatment and follow-up. *Ann Oncol*. 2017;28 Suppl.4:iv62–71, <http://dx.doi.org/10.1093/annonc/mdx223>.